



Route Monitoring

Monitor custom routes and broadcast messages to drivers in real-time

Overview

When large events, accidents, or other unplanned traffic stoppages occur, it's important for road authorities, event managers, emergency services, and other trusted partners to be able to monitor the traffic situation on key routes. By providing users with information about current route travel times, delay times in comparison to free-flow traffic, and average data confidence level, the TomTom Route Monitoring

service provides comprehensive traffic monitoring – making it easy for users to take proactive measures and improve mobility.

TomTom Route Monitoring is based on TomTom's live traffic technology, which is created by merging multiple data sources, including anonymous measurements from GPS navigation devices, mobile phone signals and sensor data from governments.

Features

Easy-to-use web interface

Flexible API integration into existing applications

No road infrastructure required

Highly accurate and granular data from TomTom live traffic technology

Benefits

Allows users to quickly create, monitor, and compare custom routes

Enables users to send travel times and announcements to road-side displays (VMS), websites, and social networks

Provides data within minutes through web page and route creation wizard

Requires minimal setup or training making it cost efficient

Gives users ability to perform detailed analysis and have confidence that the data is reliable



End-user benefits

TomTom Route Monitoring benefits both drivers and road authorities, for example:

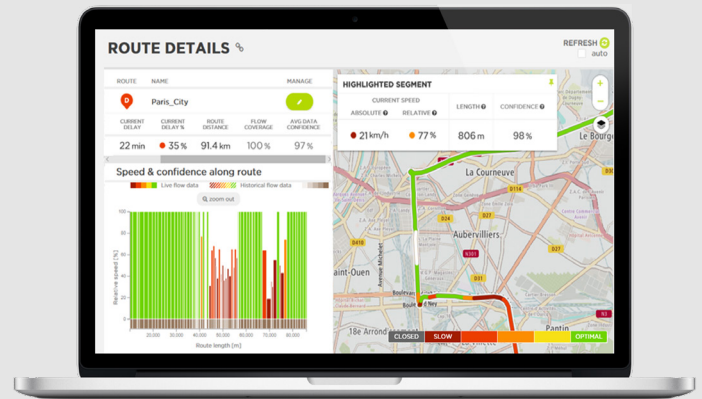
- Traffic managers can monitor conditions with travel times, delay times, and flow data, and then broadcast analysis and proactive measures through variable-message sign (VMS) integration, mobile or web apps, TV, and radio
- Drivers can be better informed and encounter less congestion, improving their driving experience

Product formats

TomTom Route Monitoring is accessible via:

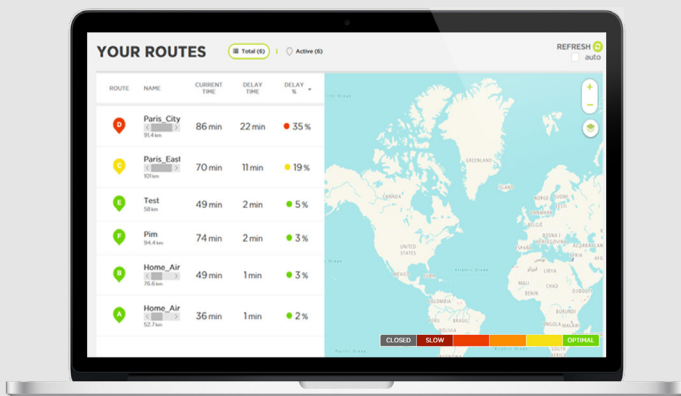
- A web based application @ <https://move.tomtom.com/>
- An API @ <https://developer.tomtom.com/>

Analysis examples

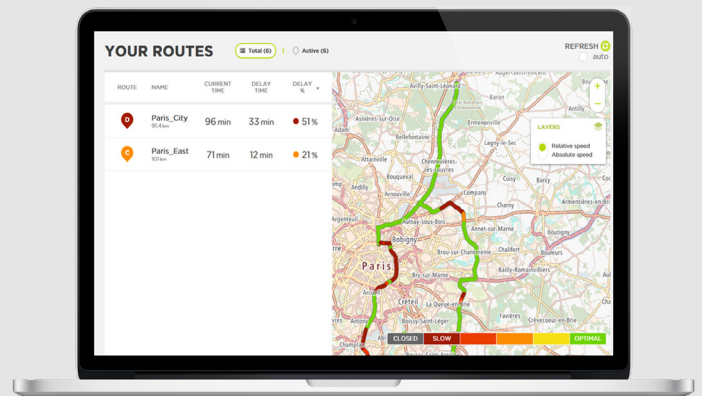


View real-time details per route, such as travel time, delay information, and confidence level; Easily identify the worst segments and bottlenecks through speed charts

Get detailed information per segment of a route



Monitor and compare multiple routes' real-time conditions



Compare pre-defined routes as you monitor real-time traffic flow conditions; Communicate current alternative route options to a broader audience through VMS API connectivity